

Getting Started: Manuscripts Research

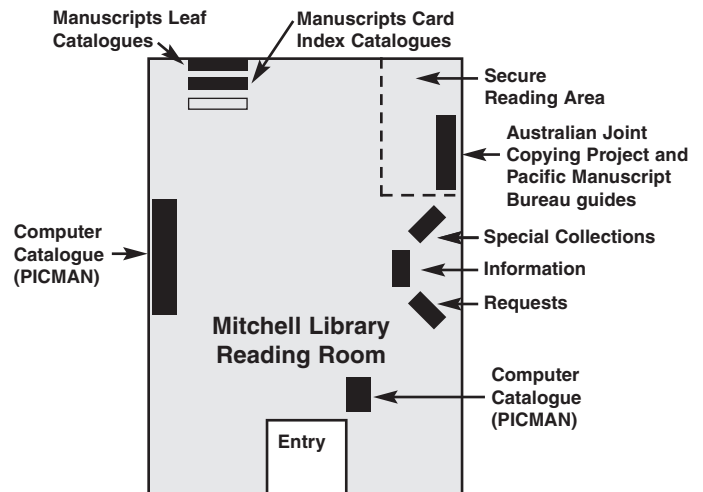
Scope of the collection

The Mitchell Library and the Sir William Dixon Research Library hold one of the most significant collections of manuscripts in Australia.

The collections comprise the personal papers of individuals and the archives of businesses and other private organisations. They include diaries, journals, letters, literary works, oral history interviews, minutes of meetings and correspondence.

The Mitchell Library manuscripts collection includes material from the 17th century to the present and although the collection relates primarily to New South Wales, there are strong holdings of Australian and Pacific region material.

Location of catalogues



The Mitchell Library Manuscripts Collection is described in five catalogues

Manuscripts Index Catalogue

The Index Catalogue describes manuscripts catalogued before 1945. It indexes individual items, most of which are within specific manuscript collections.

Search the Index Catalogue for the creator of a collection, name or subject.

A collection indexed in the catalogue may be described in a 'finding list' available at the Information Desk. These give the complete contents of the collections.

Card entry in the Manuscripts Index Catalogue

HUTCHINSON, J W		
1879	holograph letter to Sir W. Macarthur,	single
Au. 28	August 28 1879, informing him of	item from
	unanimous election as President of	Macarthur
	Australian Club	collection
	(Macarthur Papers, vol.43, p.301)	
	A2939	call
		number

'Leaf' Catalogues

The two 'Leaf' Catalogues describe manuscript collections catalogued after 1945 and before 1992. Each 'Leaf' Catalogue comprises an alphabetical card index entry linked to contents lists of manuscript collections in separate volumes or folders next to the catalogue drawers.

To search Leaf Catalogue No. 1:

- **search** the 'Card Index to MSS Leaf Catalogue No.1' by creator, name or subject
- **note** the reference number on the index card, e.g. 7-776C
- **use** the reference number to find a description of the collection in the black leaf catalogues labelled 'ML Catalogue of MSS', A, B, and C Series.

To search Leaf Catalogue No. 2:

- **search** the 'Card Index to MSS Leaf Catalogue No. 2' by creator, name or subject
- **note** the call number if a 'Detailed Contents List' is available
- **use** the call number to find a description of the collection in the blue leaf catalogues labelled 'Detailed Contents List'.

Card entry in Index to Leaf Catalogue No. 2

LIMB, Bobby	ML MSS 3753	call number which links to description in Leaf Catalogue No. 2
T.V. and radio scripts, 1958-1971, with related papers, 1965-1969		
DETAILED CONTENTS LISTS AVAILABLE		

Card entry in Index to MSS Leaf Catalogue No.1

MOORE, ARTHUR JOHN, Lance-corporal Primary Sources			reference to description in Leaf Catalogue No.1
1915-1919	ML MSS 911	7-776 C	

7-776 C		
MOORE, ARTHUR JOHN, Lance-corporal		ML MSS 911
Diaries, 9 Nov., 1915 - 2 Apr. 1919. MS., carbon typescript. illus. with sketches 1 (2") box		
Lance-corporal A.J. Moore was a stretcher bearer with the Eighth Field Ambulance of the Australian Imperial Forces		
CONTENTS		Item No.
a. Diaries (4), handwritten, describing author's voyage overseas, his activities in Egypt, France, Belgium and England, and his return voyage to Australia. Includes notes, mainly re-correspondence		1-4
b. Carbon typescript copy, with MS. corrections, of above diaries. Includes index. Pages 115, 122 and 129 with relevant entries, missing		5

Description in Leaf Catalogue No. 1

Description in Leaf Catalogue No.2

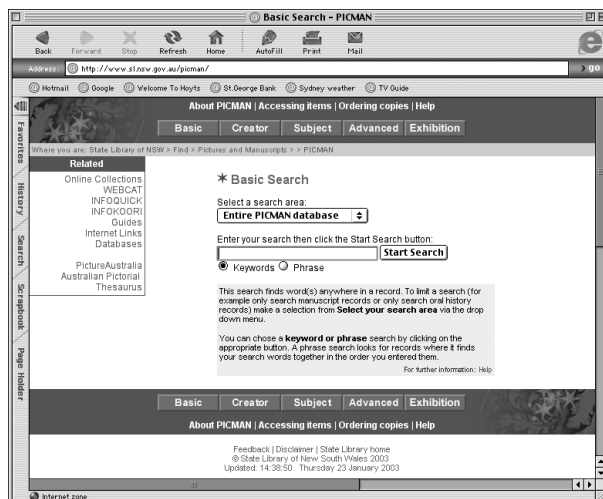
		ML MSS 3753 ML 1977/76
LIMB, BOBBY - T.V. and radio scripts, 1958-1971, with related papers, 1965-1969		
Date	Contents	Box No.
1958	Bobby Limb Show radio scripts (Programmes 14-26)	H2392
1958-59	Idiot Weekly radio scripts (Programmes 1-12) and Top of the Town scripts (Programmes 1-13)	
1960	Bandwagon T.V. scripts	H2393

Computer Catalogue

The Computer Catalogue of Pictures and Manuscripts (PICMAN) contains records for manuscript and pictures collections catalogued since 1992. It includes correspondence, diaries, literary works, oral history interviews and minutes of meetings.

While the catalogue defaults to a basic keyword search, more specific searches are also possible:

- **Creator** – search by the name of the creator of a manuscript
- **Subject** – search headings such as author, topic, place or name, assigned to each item or collection
- **Advanced** – allows searches on a combination of criteria, such as date, place, topic, author, creator or media.



www.sl.nsw.gov.au/picman

Dixson Library Manuscripts Card Catalogue

Search the card index which describes manuscripts collected by Sir William Dixson. It is linked to a Leaf Catalogue giving more detailed descriptions.

Australian Joint Copying Project and Pacific Manuscripts Bureau

The Australian Joint Copying Project is a microfilm collection of historical materials of Australian and Pacific interest held in Britain and Ireland. It includes official records, from agencies such as the Colonial Office and Home Office, and records from miscellaneous organisations such as missionary societies.

The Pacific Manuscripts Bureau provides microfilm copies of archives, manuscripts and rare publications relating to all branches of Pacific studies. Guides are available in the secure reading room.

Access and handling of material

Many original manuscripts are copied on microfilm which will be issued in order to preserve the originals. You will be asked to view original material in the Secure Reading Area. Use of some original items may be restricted due to fragility or format. Appointments can be made with staff to view these items. Access to some material may be restricted or subject to special conditions, e.g. the whole or part of a collection may be closed for a specified period to protect the privacy of individuals or organisations.

Copying

Please consult staff at the Special Collections Desk to organise copying of items in the manuscripts collection or to check whether an item is in copyright.

Ask for help

Library collections can be complex, particularly if you are not familiar with them. If you are having difficulties with your search, please ask for help. Library staff are happy to provide assistance and may be able to suggest further research strategies.