

Stage 2 (Years 3 - 4) Creative Arts

Student activity 3: Rainbow Lorikeet in close up



Watercolour pastel version:

From a close up section like this, focus on the lines and shapes first, then try to identify which colours are background and which are used for details.

Begin with the background colours in the basic shapes you have drawn and then add the lines and patterns on top.

With watercolour pastel, you can use quite loose lines to capture the movement in the image. The roughness of the lines will be softened when they are water brushed.



a)



b)



c)

This is the sequence of how the image changes when using watercolour pencils or crayons.

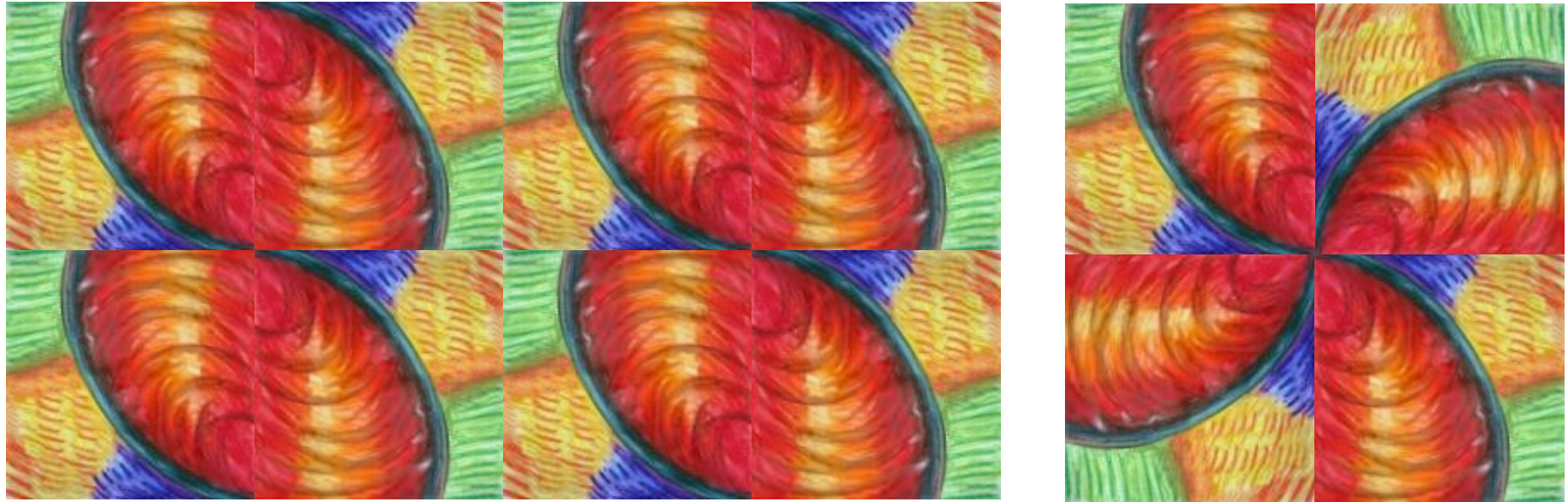
The background colours can be laid down first and let dry completely, then add the details over the top

OR drawn like this and carefully activated with a watercolour brush

a) Before water – drawn only

b) Then after water is brushed over the drawing, the colours become much brighter.

c) When the background colours are dry, more tonal details with watercolour pencil or crayon and water wash again to create depth and interest.



Just a couple of ways to extend the look of the design.

The possibilities for display combinations are almost endless and with access to a colour copier, the designs can easily be enlarged or reduced and tessellated to create a range of visual feasts.

Artworks can be made from an infinite array of stimuli – try this technique of focussing on a small detail and repeating it in a variety of ways with another starting point to create other abstract designs.