

KIDS ACTIVITY BOOK



# Follow *the* TRAIL

Start at the Mitchell Building steps.  
Come inside and explore the Library.  
You can write and draw in this book.



SHAKESPEARE ROOM



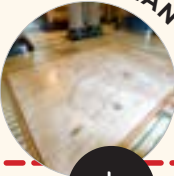
3.

A circular inset image showing the interior of the Shakespeare Room, featuring a large window with glass panes. A black circle with the number '3.' is positioned to the right of the image.

FIND SOME BIG GLASS

ALONG THE CORRIDOR

TASMAN MAP



1.

A circular inset image showing a large map of Tasmania on a table. A black circle with the number '1.' is positioned below the image.

START HERE

GO UP THE STEPS



MITCHELL LIBRARY STEPS

A green rectangular sign with the text 'START HERE' is attached to a red dot on a dashed line. The line curves upwards and to the right, with the text 'GO UP THE STEPS' written along it. Below the line is a circular inset image of the Mitchell Library's classical facade with columns. The text 'MITCHELL LIBRARY STEPS' is written in a semi-circle around the bottom of the image.

2.

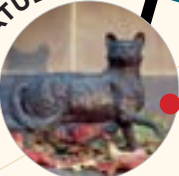


READING ROOM

A circular inset image showing a large, multi-story reading room with many bookshelves. A black circle with the number '2.' is positioned to the left of the image. The text 'READING ROOM' is written in a semi-circle around the right side of the image.

END HERE

TRIM STATUE



8.

A green rectangular sign with the text 'END HERE' is attached to a red dot on a dashed line. The line curves downwards and to the left, with the text 'END HERE' written along it. Below the line is a circular inset image of a blue and grey dog statue. The text 'TRIM STATUE' is written in a semi-circle around the top of the image. A black circle with the number '8.' is positioned to the right of the image.

FIND THE ARCHED WINDOW TO  
LOOK OUT AT GADIGAL COUNTRY ▼



5.

◀ LOOK AROUND THE GALLERIES

UP IN THE LIFTS ▶



4.

CASES ▶

ALONG THE CORRIDOR ▼



6.



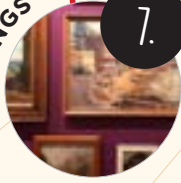
DON'T MISS THE NEW

# Children's Library

— IN THE BASHIR READING ROOM, LG1, MACQUARIE STREET BUILDING

PAINTINGS

7.



◀ OUTSIDE THE BUILDING

DOWN THE STAIRS ▼

1.

## TASMAN MAP

# Far, far away

When this map was made, explorers from Europe knew very little about this part of the world. Look carefully at the map. Can you find the mythical sea creatures? Draw your own super scary sea monster.



ARGH! SCARY!

2.

## MITCHELL LIBRARY READING ROOM

### Finding your way

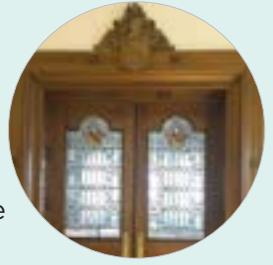
Before computers, people used card catalogues like this to find what they wanted in libraries. Can you see the drawers for Maps? Have a peek inside. Why do you think there are so many maps in the collection? Draw a map of your journey from home to the Library.



### 3. SHAKESPEARE ROOM DOOR

## Shakes spear

Shakespeare's coat of arms features a falcon shaking its wings, and a spear through the centre — a pun on the name Shakespeare. Can you design a coat of arms for your family name?



THE NSW COAT OF ARMS HAS A LION + A KANGAROO



4.

## THE COLLECTORS' GALLERY

# Piecing together the past

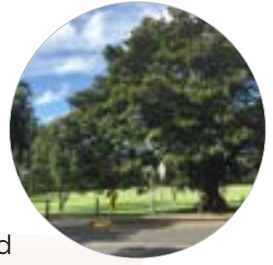
This broken crockery was found on the site when the Library was built. If we glued the pieces back together, what would they make? What do you think they were used for?



5. COUNTRY

# Gadigal Country

The Library is built on the land of the Gadigal people of the Eora nation. We pay our respects to Gadigal Elders past, present and emerging and we thank them for taking care of country for countless generations. Draw yourself on Eora Country.



GADI + GAL = PEOPLE  
OF THE GRASS TREE



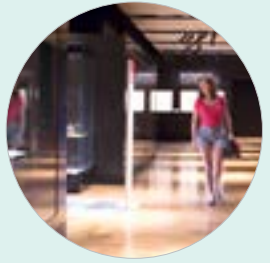


6.

## AMAZE GALLERY

### What a surprise!

Choose one thing in this exhibition that you are surprised to find in the Library's collection. What would you like to know about it?



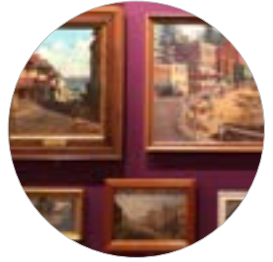
A large white rectangular area containing ten horizontal light blue lines for writing, each preceded by a small light blue square bullet point.

7.

## PAINTINGS FROM THE COLLECTION

# No place like home!

Look at the different houses in these paintings.  
Imagine what it would feel like to be inside.  
Which one would you like to live in and why?



I LOVE THE HOUSE THAT  
HAS A WATER VIEW!

8.

## TRIM THE CAT STATUE

# A purrrrrfect friend

Explorer Matthew Flinders had a favourite cat called Trim who travelled around Australia with him. How many places did you find Trim hiding in the building?



# Learning AT THE STATE LIBRARY

**The State Library of NSW offers programs and activities for learners of all ages.**

**School holiday activities** include drop-in art and craft, creative workshops, author visits and kids tours.

**Family Fun Days** are held four times a year on the last Sunday of the season, with activities for the whole family: workshops with children's authors and illustrators, craft activities and themed kids tours inspired by the Library's collections.

**Stories in Surprising Places** is to introduce little ones to the Library with a 45 minute program. We use children's literature to engage children with Library collections and spaces. There are four themes. Aimed at 3-5 year olds and available for groups of 10-20.

**Lifelong Learning** offers a range of seminars, courses, talks and workshops, from researching your family history to caring for your precious photographs, paintings or diaries.

**K-12 school programs** onsite and online are designed to extend and enrich the learning experience of students and teachers.

More information: [www.sl.nsw.gov.au/learning](http://www.sl.nsw.gov.au/learning)  
or email [learning.library@sl.nsw.gov.au](mailto:learning.library@sl.nsw.gov.au)

