

Activity 2: Acquiring geographical information – Tropical, desert and temperate places

- a. On a map of Australia, students plot the capital cities, Barron River, Cairns, Bourke, Enngonia, Swansea (Tas) and Freycinet Peninsula. Students mark in the key climate zones http://www.bom.gov.au/iwk/climate_zones/map_1.shtml.
- b. Students analyse of Sources 1 to 8. They write their observations and inferences of each place in a comparison table.

Source 1: Mouth of the Barron River, northern Queensland, 1881, drawing by J.E Tenison-Woods



<http://www.acmssearch.sl.nsw.gov.au/search/itemDetailPaged.cgi?itemID=423858>

Source 2: Aerial view of tropical rainforest adjoining the Barron River near Cairns northern Queensland, 2000, CSIRO Science Image 4193 is licenced under CC3.

<https://creativecommons.org/licenses/by/3.0/au/legalcode>



<http://www.scienceimage.csiro.au/image/4193>

Source 3: Port Darwin, Northern Territory, 1886, drawing by J.E Tenison-Woods



<http://www.acmssearch.sl.nsw.gov.au/search/itemDetailPaged.cgi?itemID=423858>

Source 4: Port Darwin, Northern Territory, 2014, photographed by G. Braiding



Source 5: In the Australian desert, c. 1870, watercolour painting



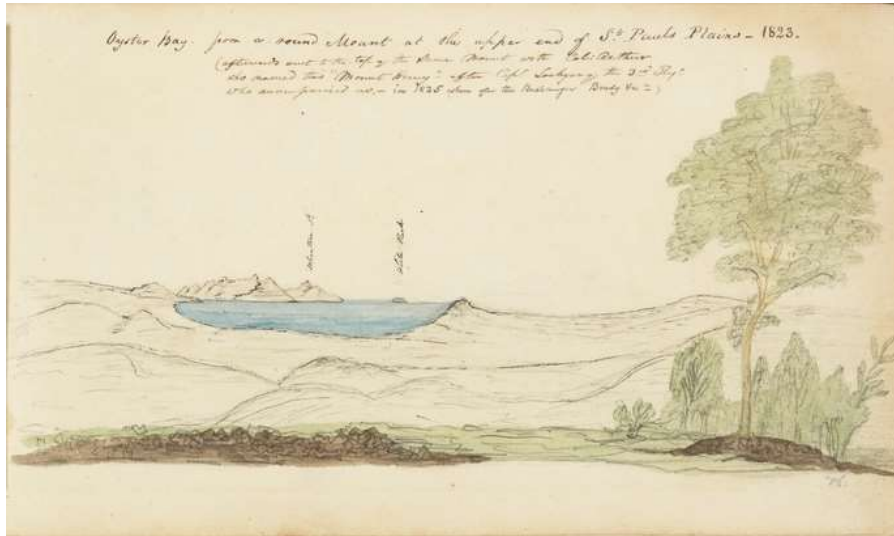
<http://www.acmssearch.sl.nsw.gov.au/search/itemDetailPaged.cgi?itemID=447400>

Source 6: Feeding cattle with sugar cane, Dunsandle Property, Enngonia, NSW, 2002, photographed by Darren Clark.



<http://acmssearch.sl.nsw.gov.au/search/itemDetailPaged.cgi?itemID=447439>

Source 7: Oyster Bay from or around mountain at the upper end of St Pauls Plains, Tasmania, 1823, drawn by Thomas Scott



<http://www.acmssearch.sl.nsw.gov.au/search/itemDetailPaged.cgi?itemID=423959>

Source 8: Oyster Bay on the Freycinet Peninsula, Tasmania, 2004, photographed by Jörn Brauns (Public Domain)



https://en.wikipedia.org/wiki/Great_Oyster_Bay#/media/File:Blick_ueber_Great_Oyster_Bay_zur_Freycinet_Peninsula.jpg

Transcript Source 7 - Afterwards went to the top of the same mount with Col. Arthur who named this 'Mount Henry' after Capt. Lockyer of the 3rd Regt. who accompanied us - in 1825 when after the Bushranger Brady &c.

COMPARISON TABLE – LOCATION AND PLACES			
	Place: Darwin	Place: Enngonia	Place: Freycinet Peninsula
	Climate zone: Tropical	Climate zone: Desert	Climate zone: Temperate
Where in Australia is this place located?			
Nearest major city or town			
Observe Describe what you see in each image. Indicate if it is a sketch, painting or photo.			
Infer What would it be like to live in this place?			
What can you learn about the place from each image?			