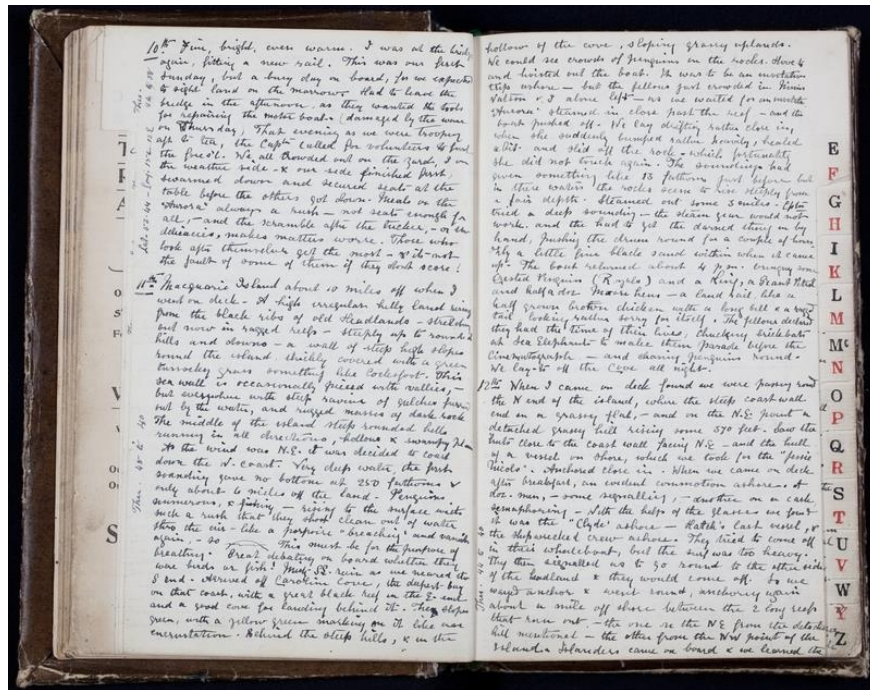


Activity 2: Acquiring geographical information – Macquarie Island Australasian Antarctic Expedition

- Analyse Sources 3 to 11 relating to the survey of Macquarie Island as part of the Australasian Antarctic Expedition led by Douglas Mawson. The expedition left Hobart on 2nd December 1911 and sighted Macquarie Island on 11th December 1911.
- Explore the zoomable images of Sources 12 and 13: Leslie Blake's relief map and geological sketch of Macquarie Island. Discuss the data presented in the maps, the elements of the maps and the mapping conventions used.
- View contemporary images of the Macquarie Island World Heritage Area. Research the unique values that were promoted for its inclusion onto the World Heritage List. <http://whc.unesco.org/en/list/629>

Source 3: Charles Turnbull Harrison diary, 2 December 1911 to 31 December 1912, p 44



Transcript of diary by Charles Turnbull Harrison, biologist and artist, Australasian Antarctic Expedition

11th December 1911 (p. 44)

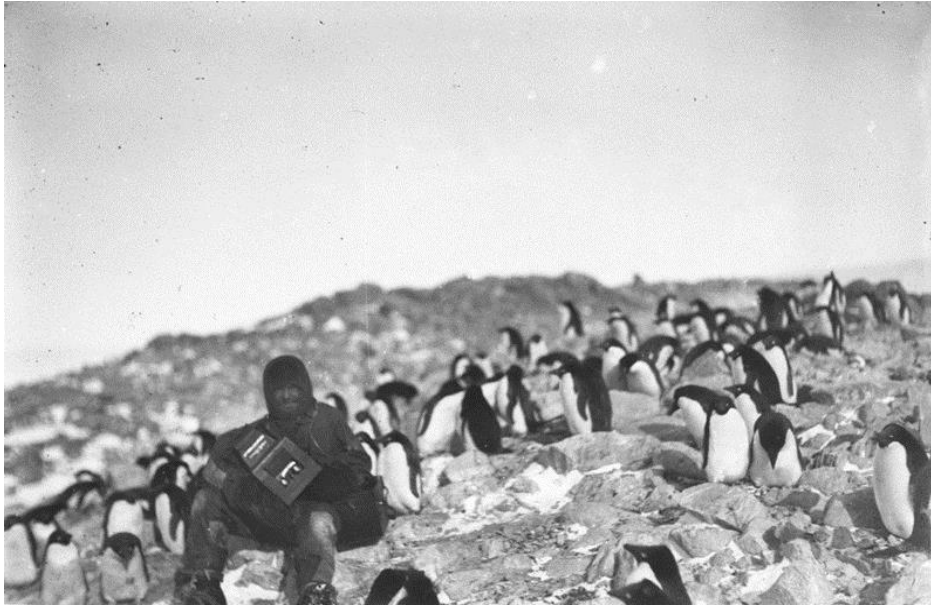
Macquarie Island about 10 miles off when I went on deck – A high irregular hilly land rising from the black ribs of old Headlands – stretching out now in ragged reefs – steeply up to rounded hills and downs – a wall of steep high slopes round the island, thickly covered with a green tussocky grass something like Cocksfoot.

15th December 1911 (p. 48)

As we went up we had a great view of the rookery below – a triangle of say 300 paces across the middle base of grass & covered with birds... It was all moving with penguins. Penguins in the rookeries – Penguins on the rocks, Penguins streaming westward & shoreward from the sea. On the beach 3 or 4 large Sea Elephants were peacefully sleeping with the penguins swarming round, and one small Sea Elephant had made an excursion into the rookery, sweeping the birds off their nests with every movement –

<p>http://www.acmssearch.sl.nsw.gov.au/search/itemDetailPage.d.cgi?itemID=976743</p> <p>Complete diary</p> <p>http://www.acmssearch.sl.nsw.gov.au/search/itemDetailPage.d.cgi?itemID=976743</p>	<p>and a crowd of brown Skuas following him up, fighting over the spoils of the nests.</p> <p>Transcript</p> <p>http://acms.sl.nsw.gov.au/transcript/2015/D15086/a5628.html</p>
<p>Read:</p> <p>What was the landscape of Macquarie Island?</p> <p>What vegetation covered the island?</p> <p>What wildlife was seen?</p> <p>Infer:</p> <p>What was the purpose of the diary?</p> <p>How would Charles have used his diary?</p> <p>What does the diary provide today?</p>	

Source 4: Frank Hurley, expedition photographer, amongst the penguins, Macquarie Island, 1911



<http://www.acmssearch.sl.nsw.gov.au/search/itemDetailPaged.cgi?itemID=53732>

Source 5: Young skua on nest, Macquarie Island, 1911, photographed by Frank Hurley, expedition photographer



<http://www.acmssearch.sl.nsw.gov.au/search/itemDetailPaged.cgi?itemID=17777>

Observe: What are the natural features of the area? What are the human features of the area?

Are there people in the photograph? If so, what are they doing?

Infer: Why was the photograph taken? What were the photographer's perceptions of the area? Why do you think that?

Source 6: The Expedition Hut at Macquarie Island, 1911, photographed by Leslie R. Blake, expedition geologist



<http://www.acmssearch.sl.nsw.gov.au/search/itemDetailPaged.cgi?itemID=53526>

Source 7: Panorama looking south from Wireless Hill, Macquarie Island, 1911, photographed by Leslie R. Blake, expedition geologist



<http://www.acmssearch.sl.nsw.gov.au/search/itemDetailPaged.cgi?itemID=53547>

Observe: What are the natural features of the area? What are the human features of the area?

Are there people in the photograph? If so, what are they doing?

Infer: Why was the photograph taken? What were the photographer's perceptions of the area? Why do you think that?

Source 8: The head of Caroline Cove, Macquarie Island, 1911, photographed by Douglas Mawson, geologist and expedition leader



<http://www.acmssearch.sl.nsw.gov.au/search/itemDetailPaged.cgi?itemID=60427>

Source 9: A baby sea-elephant alarmed, Macquarie Island, 1911, photographed by Douglas Mawson, geologist and expedition leader



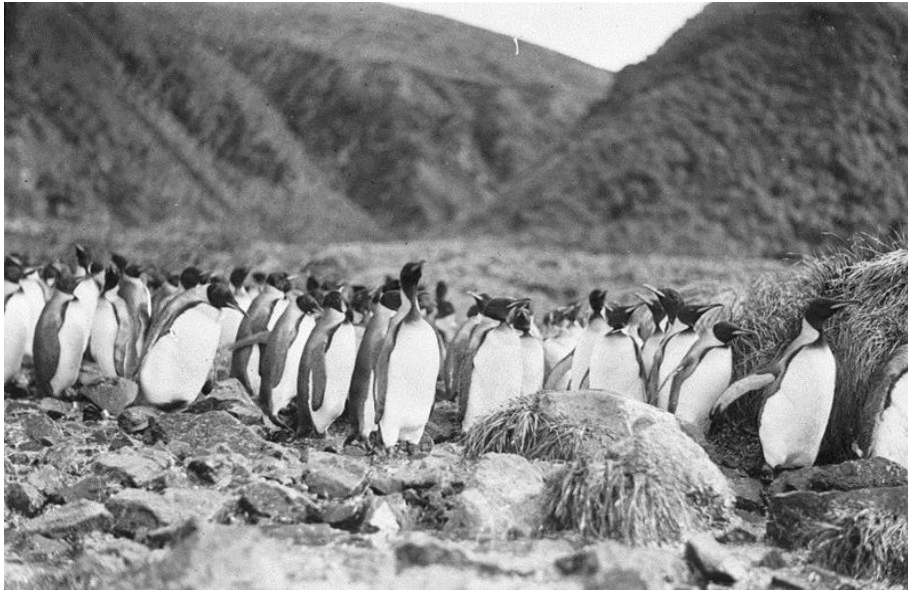
<http://www.acmssearch.sl.nsw.gov.au/search/itemDetailPaged.cgi?itemID=61484>

Observe: What are the natural features of the area? What are the human features of the area?

Are there people in the photograph? If so, what are they doing?

Infer: Why was the photograph taken? What were the photographer's perceptions of the area? Why do you think that?

Source 10: King penguins at Lusitania Bay, 1911, photographed by Harold Hamilton, expedition biologist



<http://www.acmssearch.sl.nsw.gov.au/search/itemDetailPaged.cgi?itemID=41646>

Source 11: Victoria penguin and young on Macquarie Island, 1911, photographed by Harold Hamilton, expedition biologist



<http://www.acmssearch.sl.nsw.gov.au/search/itemDetailPaged.cgi?itemID=41656>

Observe: What are the natural features of the area? What are the human features of the area?

Are there people in the photograph? If so, what are they doing?

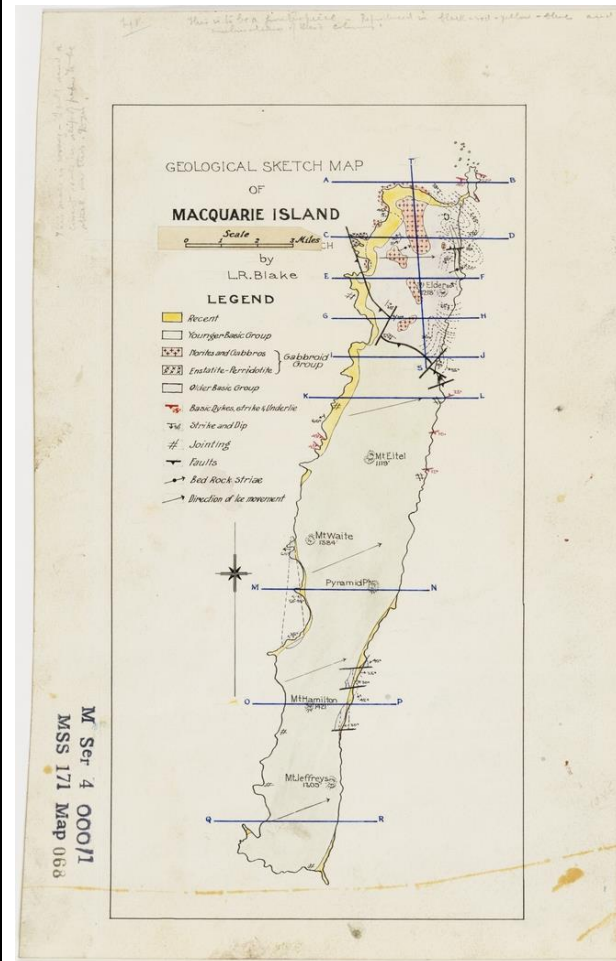
Infer: Why was the photograph taken? What were the photographer's perceptions of the area? Why do you think that?

Source 12: Macquarie Island Relief Map 1:40000, 1913 by Leslie R. Blake, expedition cartographer and geologist. It is still considered to be one of the finest surveys of Macquarie Island.



<http://acms.sl.nsw.gov.au/album/albumView.aspx?itemID=883475&acmsid=0> Zoomable image available

Source 13: Geological sketch of Macquarie Island, 1911-1914 by Leslie R. Blake, expedition cartographer and geologist



<http://acms.sl.nsw.gov.au/album/albumView.aspx?itemID=959995&acmsid=0> Zoomable image available.

